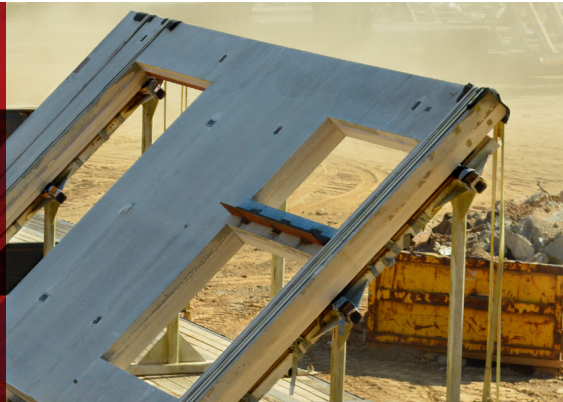
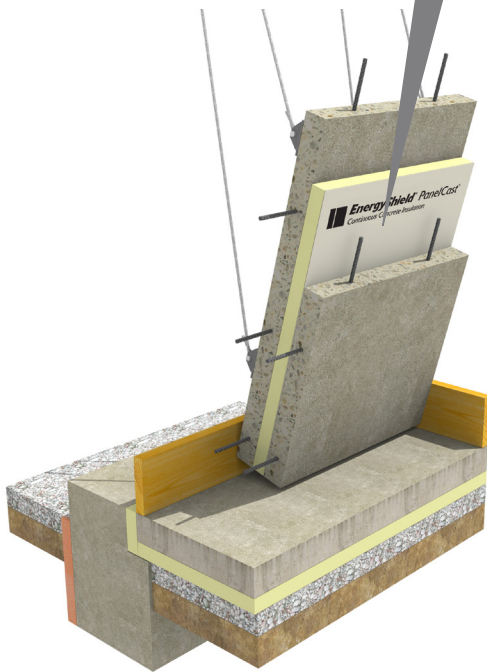


**Concrete
Insulation.
MADE BETTER.**



The texture provides a better bond than XPS or EPS without an extra step required to roughen the surface.



Introducing a new coated glass faced insulation for **concrete wall applications.**

- Polyiso material provides higher performance finished product
- Superior R-value for more efficient concrete walls
- Ideal for Site-Cast Tilt-Up, Plant Precast, Cast-In-Place

Why EnergyShield PanelCast

Efficient: Our polyiso product alternative to traditional XPS and EPS delivers a higher R-value, allowing for a thinner panel profile and reduced operating costs due to lower energy consumption.

Resilient: Durable glass mats resist degradation from UV and petroleum based products; PanelCast holds up under casting and keeps connectors in place.

Superior Bond: The texture is rougher than foil and provides a better bond than smooth faced rigid insulation.

Alkali Resistant: Unlike foil facers, the coated glass facer naturally resists alkalinity in the concrete and provides a superior bond to wet concrete.

Permeable: Coated glass facers (CGF) are permeable and engineered to allow vapor movement versus foil facers that create vapor barriers.

Fire Resistant: The only plastic insulation that does not melt like XPS or EPS when exposed to fire.

Compatibility: Improved performance with various wythe connector systems.

Higher R-value per inch, better fire test performance and solvent resistance.



PRODUCT CERTIFIED FOR LOW
CHEMICAL EMISSIONS: UL.COM/GG
UL 2818

The configuration of weather resistive barriers and/or air barriers used in conjunction with EnergyShield PanelCast is the responsibility of the designer. Atlas recommends sealing into rough opening flashing and to other portions of the building, including the roof and below grade. Atlas EnergyShield PanelCast facers are compatible with most standard joint fillers, sealants and adhesives. Consult the product manufacturer for specific compatibility.

2000 RiverEdge Parkway, Suite 800, Atlanta, Georgia 30328

wall.atlasroofing.com

CONNECTING FUNCTION WITH FACILITY™

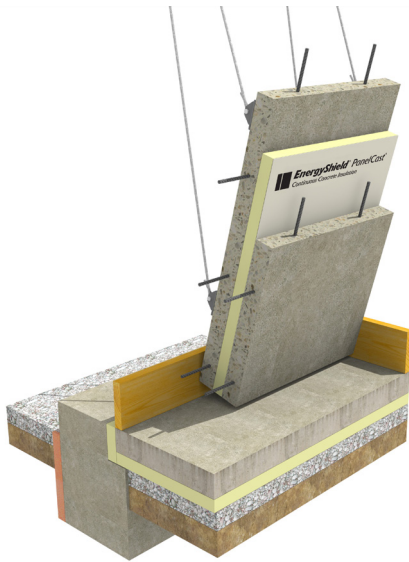


EnergyShield® PanelCast™

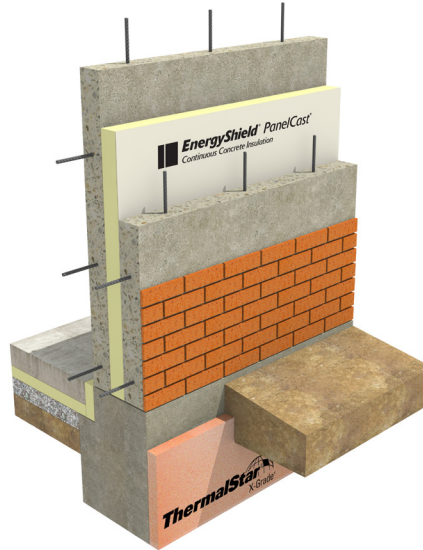
Continuous Concrete Insulation

EnergyShield PanelCast Continuous Wall Insulation delivers the durability and efficiency needed for concrete wall applications.

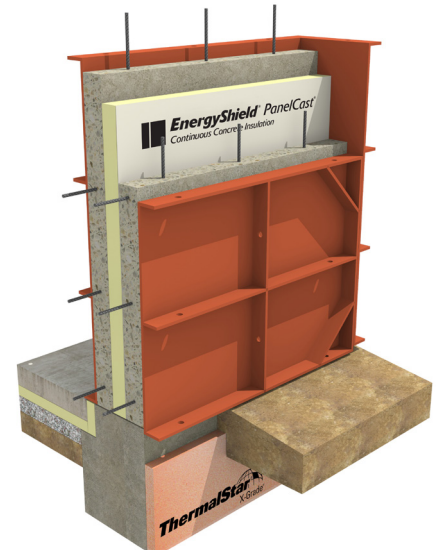
It is compatible with connector systems used in Site-Cast Tilt-Up, Plant Precast, Cast-In-Place insulated concrete wall systems.



SITE-CAST TILT-UP



PLANT PRECAST



CAST-IN-PLACE

EnergyShield® PanelCast® Polyiso For High Performance Concrete Insulated Panels

With a higher R-value per inch, better fire test performance and solvent resistance, EnergyShield® PanelCast® is the smarter choice versus XPS for concrete applications.

	R-value	Fire Test Performance: ASTM E84, NFPA 285 & NFPA 286/UL 1715	Compatibility
POLYISO	1 inch of Polyiso has a minimum R-value of 6.0. 3.5 inches of Polyiso have an R-value of 21.7.	In all 3 fire tests, Polyiso performs exceptionally well and does not melt.	Not affected when exposed to petroleum based solvents in adhesives, paints, stains and water repellent coatings and in bituminous waterproofing.
VS			
XPS	Standard XPS has an R-value of 5.0 per inch, regardless of thickness.	XPS softens at 165°F and melts between 200°F to 210°F which can potentially spread flammable material.	Can dissolve when exposed to petroleum based solvents in adhesives, paints, stains and water repellent coatings and in bituminous waterproofing.

For more information, contact your Atlas sales rep.

LOCAL Production and Support: Atlas has the largest production footprint of any polyiso manufacturer for quick access to the products you need.

Camp Hill, PA
(800) 688-1476
Fax: (717) 975-6957

Diboll, TX
(800) 766-1476
Fax: (936) 829-5363

East Moline, IL
(800) 677-1476
Fax: (866) 740-6019

LaGrange, GA
(800) 955-1476
Fax: (706) 882-4047

Northglenn, CO
(800) 288-1476
Fax: (303) 252-4417

Phoenix, AZ
(800) 477-1476
Fax: (602) 477-8897

Toronto, ON
(888) 647-1476
Fax: (877) 909-4001

Vancouver, BC
(855) 265-1476
Fax: (604) 395-836

2000 RiverEdge Parkway, Suite 800, Atlanta, Georgia 30328

wall.atlasroofing.com

CONNECTING FUNCTION WITH FACILITY™

