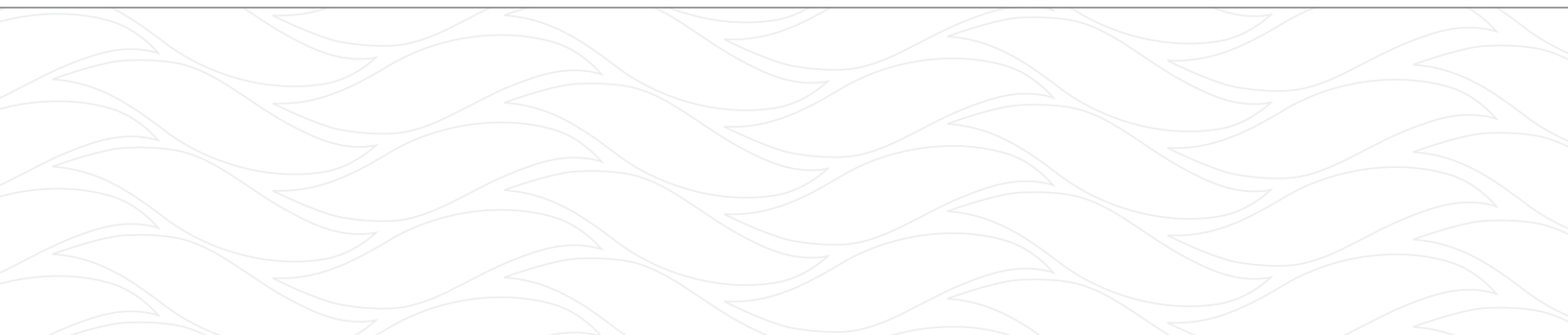




Structural Post

Installation Instructions





Tools and Supplies required for Structural Post Installation

- Ladder
- Tape Measure
- Carbide-Tipped Multi-Purpose Blade
- Miter Saw
- Pencil
- Safety Glasses
- 3/16" Drill Bit
- Power Drill
- Screwdriver
- Hammer Drill with 5/32" Concrete Bit
- Level

Kit Contents:

- One Aluminum Pipe (Fig. 1)
- Two Mounting Posts (Fig. 2)
- Four 3/16" x 1-1/4" Tapcon Flat Head Screws (Fig. 3)
- Eight #8 x 1-1/4" Phillips Drive Type Flat Head Nibs Screws (Fig. 4)
- Eight #8-18 x 1" Phillips Pan Head SS Self-Tapping Screws (Fig. 5)



Fig. 1



Fig. 2



Fig. 3



Fig. 4



Fig. 5

Be sure to verify load-bearing capacity of any structural element of the project before ordering to ensure that each component meets specific requirements. Check applicable building codes since this procedure may require alterations to meet applicable building code regulations. Fypon does not, under any circumstances, warrant the installation of its products.

Step 1 - Determine the required height of the column by carefully measuring the distance from the floor to the bottom of the porch overhang or other structure being supported and cut the aluminum support pipe 1/2" shorter than that height.

Step 2 - Identify the correct location of the top mounting plate first, and use a plumb line dropped from the center point of the top plate location to accurately align the center point location for the bottom post mounting plate. (Fig. 6a, Fig. 6b, Fig. 7a and Fig. 7b)

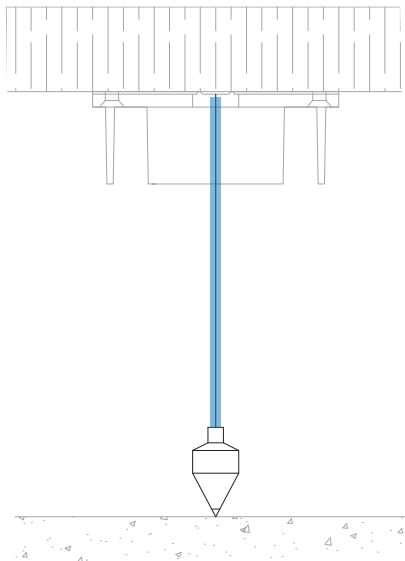


Fig. 6a

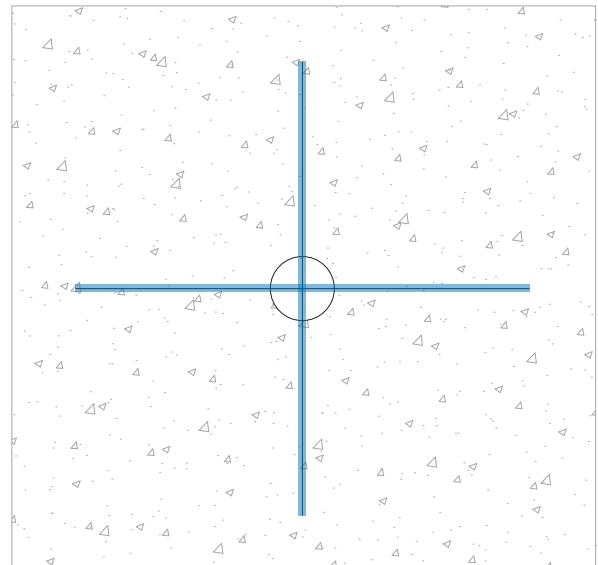


Fig. 6b

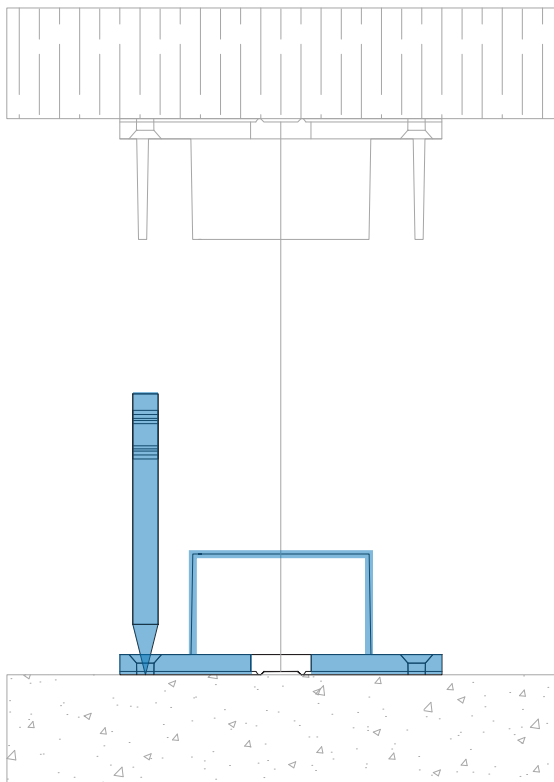


Fig. 7a

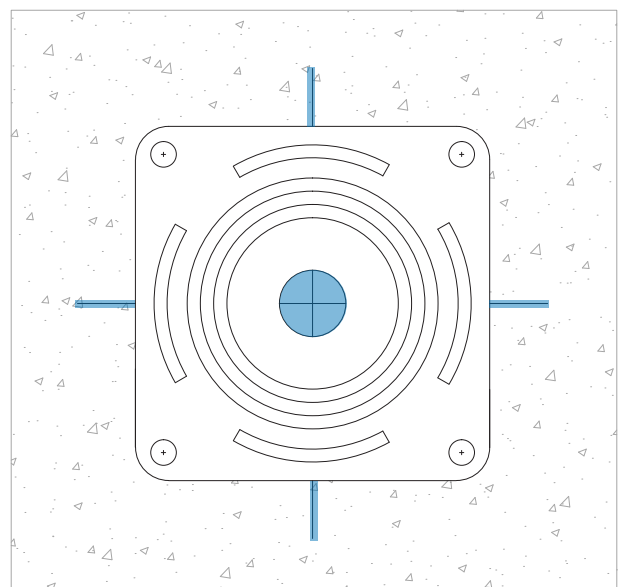


Fig. 7b

Step 3 - With a pencil, mark the holes of the mounting plate on the spot to be placed. If you have a concrete floor, pre-drill the floor using a 5/32 drill bit.

Step 4 - Insert the aluminum pipe into the mounting plate and fasten it together using the four #8 - 18" x 1" Phillips Pan Head Stainless Steel Self-Tapping screws (Fig. 5) provided. (Fig. 8)

Note: Make sure the pipe is flush with the base of the mounting post before installing the screws.

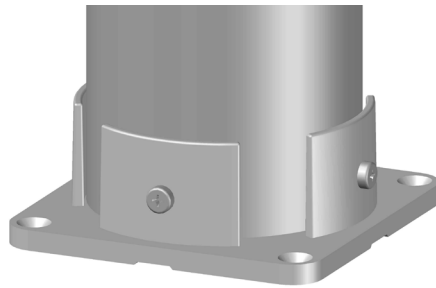


Fig. 8

Step 5 - Place the second supplied mounting plate on the top of the aluminum pipe and fasten it using the supplied four #8 - 18" x 1" Phillips Pan Head Stainless Steel Self-Tapping screws provided. See Step 4 for the proper location of the screws.

Note: The sides of the two mounting plates must be parallel to each other as shown below. (Fig. 9)

Step 6 - Raise the upper structure and set structural post into place; lift the upper structure just high enough to allow the post to be set into place between the bottom mounting plate and top mounting plate.

Step 7 - Fasten the mounting plates to the floor and ceiling using the supplied eight #8 x 1-1/4" Phillips Drive Type Flat Head Nibs Screws. (Fig. 4) Make sure the pipe is leveled. (Fig. 10)

Note: If concrete, fasten the mounting plate to the floor with the supplied four 3/16" x 1-1/4" Tapcon Flat Head Screws. (Fig. 3)

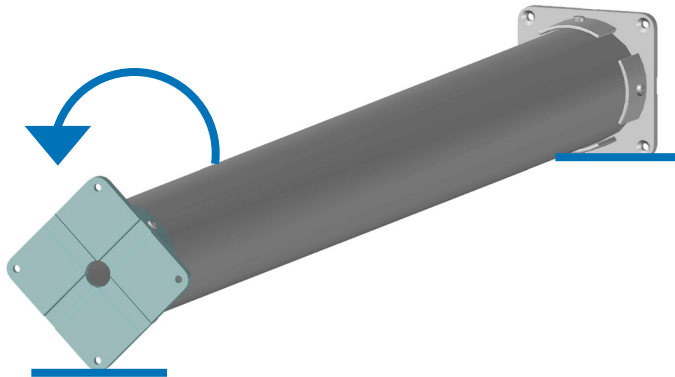


Fig. 9

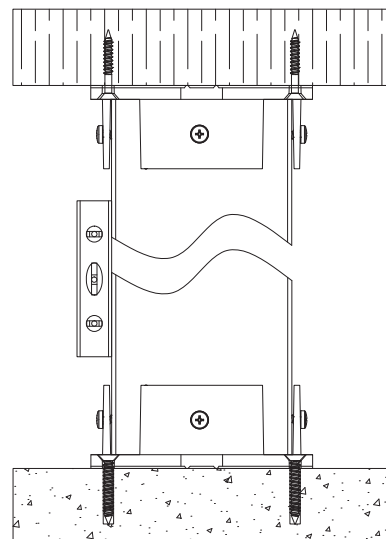


Fig. 10

Blocking for Structural Post

If QuickRail is going to be installed to a Column Wrap that has the Structural Post, you will need to properly block the area around the post behind where the brackets will be placed so it is properly fastened to the wood blocks.

Step 1 - Measure the inside of the Column Wrap and cut the wood blocks to size. (Fig. 11)

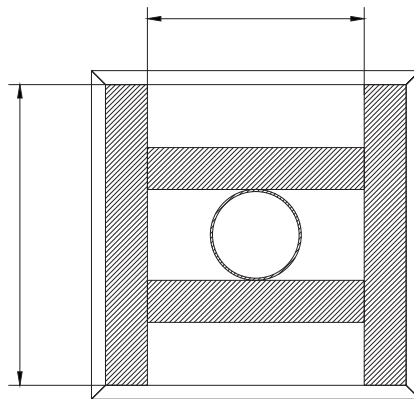


Fig. 11

Step 2 - Measure the gap of the post and screw the side wall with the inner walls. (Fig. 12a, Fig. 12b and Fig. 13)

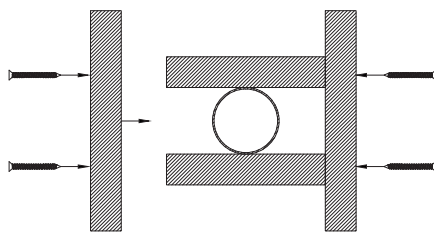


Fig. 12a

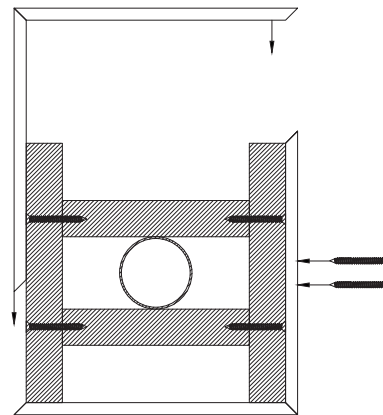


Fig. 12b

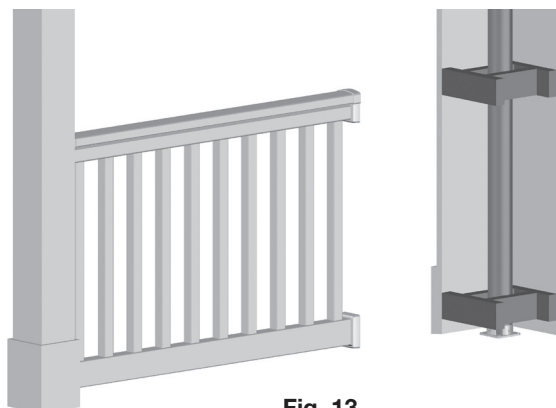


Fig. 13



IMPORTANT

Please read these installation guidelines thoroughly before beginning installation. Please note that these guidelines are provided only to assist with the installation of Fypon millwork products. Modified procedures may be required in order to meet specific situations, unique applications and local building codes. The manufacturer does not, under any circumstances, warrant the installation of its products. Be sure to wear appropriate protective clothing, gloves and safety glasses when working with any tools. Installer should check for and relocate all electrical wiring within the proposed installation area, as needed (be sure to disconnect all electric power before working with any electrical wiring and follow all applicable local electrical codes and safety procedures).



1750 Indian Wood Circle | Maumee, OH 43537 | Phone: 800.446.3040 U.S. and Canada
Fax: 800.446.9373 U.S. and Canada | fypon.com | info@fypon.com



Fypon warrants all of our products to be free from defects in material and workmanship for as long as the original owner of the residential dwelling owns the property.
For complete homeowner lifetime limited warranty details, exclusions and limitations, please see your purchase location or visit www.fypon.com.