

# LOMANCO® The ORIGINAL 750

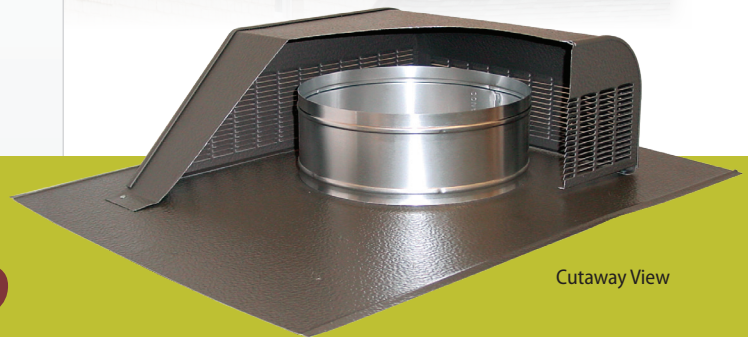
## SLANT BACK VENT

### THE ORIGINAL

- ▶ The Original Slant Back Design
- ▶ The Original Weather Proof Design
- ▶ The Original Bird Proof Design
- ▶ The Original Upward Discharging Louver Design

### FIELD TESTED & PROVEN

- ▶ Field Tested & Proven for Over 60 Years
- ▶ Field Tested & Proven to Prevent Roof Discoloration
- ▶ Field Tested & Proven Stack Effect for Enhanced Airflow
- ▶ Field Tested & Proven Customer Satisfaction

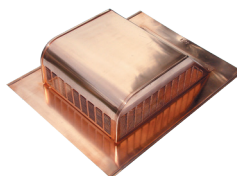


Cutaway View

**OFTEN IMITATED  
NEVER DUPLICATED**

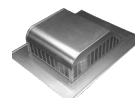
**North American Contractors' "Roof Vent of Choice" for over 60 years!**

Model	Overall Size (in.)	Opening Size (in.)	NFA (in. <sup>2</sup> )
750*	16 x 20 <sup>5</sup> / <sub>16</sub> x 5	8	50
750-G* Galvanized Steel	16 x 20 <sup>5</sup> / <sub>16</sub> x 5	8	50
750-E	23 x 27 <sup>1</sup> / <sub>4</sub> x 5	8	50
750-S *†	16 x 20 <sup>5</sup> / <sub>16</sub> x 5	8	50
750-GS*† Galvanized Steel	16 x 20 <sup>5</sup> / <sub>16</sub> x 5	8	50
750-ES †	23 x 27 <sup>1</sup> / <sub>4</sub> x 5	8	50

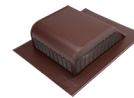


**Specialty Item: 750 is also available in Copper.**

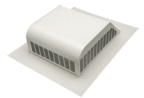
Colors Available:



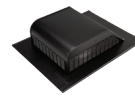
Mill Finish



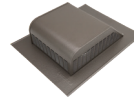
Brown



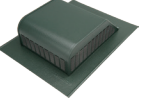
White



Black



Weathered Bronze



Forest Green  
(available in aluminum only)



**Want more info?  
Scan this QR  
code with your  
smartphone.**



**Wildland**  
**URBANinterface**

(WUI) Products  
Meets the prescriptive language of the ICC  
and California codes as well as the NFPA  
1144 standard for WUI



**CSA Approved**  
(750, 750-S)



**Texas Department of  
Insurance "Windstorm"  
Approved**

MADE IN USA

LO405\_0319

**Lomanco, Inc. • lomanco.com • 1.800.643.5596**



**lomanco**



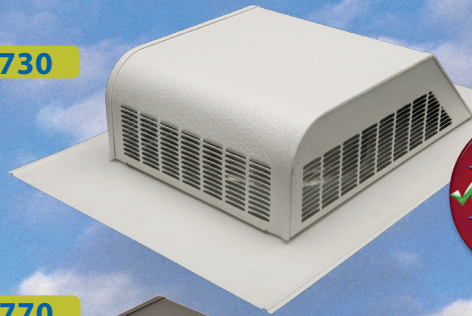
**lomancovents**



# Roof Vents

## FEATURES

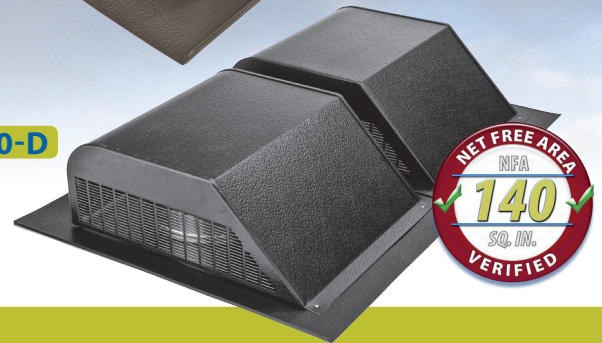
- 730



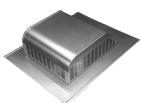
770



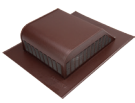
770-D



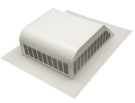
Standard Colors Available:



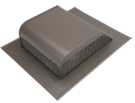
Mill Finish



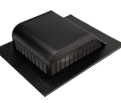
Brown



White



Weathered Bronze




Black

† **Wildland**  
**URBANInterface**

MIAMI-DADE COUNTY  
APPROVED



\*  Texas Department of Insurance "Windstorm" Approved

Model	Overall Size (in.)	Opening Size (in.)	NFA (in. <sup>2</sup> )
730*	12¾ x 17¾ x 4	6 ¼	30
750*	16 x 20½ x 5	8	50
770*	16¾ x 22¾ x 6	9½	70
770-D*	32½ x 22¾ x 6	Two 9½	140
700	16 x 20½ x 5	8	—

Exhaust System	Attic floor space to be ventilated in square feet:																																															
	1000								1500								2000								2500								3000								3500							
	Intake								Intake								Intake								Intake								Intake								Intake							
	Exhaust	C416	C616	C816	105/190	140	SV-10	DA-4 / IV-9	Exhaust	C416	C616	C816	105/190	140	SV-10	DA-4 / IV-9	Exhaust	C416	C616	C816	105/190	140	SV-10	DA-4 / IV-9	Exhaust	C416	C616	C816	105/190	140	SV-10	DA-4 / IV-9	Exhaust	C416	C616	C816	105/190	140	SV-10	DA-4 / IV-9								
	730	8	10	7	4	4	3	4	7	12	15	10	6	5	5	6	10	16	20	13	8	7	6	8	14	20	24	17	10	9	7	10	17	24	29	20	12	10	9	12	20	28	34	23	13	12	10	14
750	5	10	7	4	4	3	4	7	8	16	11	7	6	5	7	12	10	20	14	8	7	6	8	14	12	24	17	10	9	7	10	17	15	30	21	12	11	9	12	21	17	34	23	14	12	10	14	24
770	4	12	8	5	4	4	5	8	6	17	12	7	6	5	7	12	7	20	14	8	7	6	8	14	9	26	18	10	9	7	10	18	11	31	21	12	11	9	13	22	12	34	23	13	12	10	14	24
770-D	2	12	8	5	4	4	5	8	3	17	12	7	6	5	7	12	4	23	16	9	8	7	9	16	5	28	19	11	10	8	12	20	6	34	23	13	12	10	14	24	6	34	23	13	12	10	14	24

LO405 0319