

Barn Door Installation Guide

BARN DOOR HARDWARE 83" TOP MOUNT KIT



MASONITE.

Open to extraordinary.

COMMON COMPONENTS



1x

Right Stopper



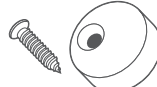
1x

Left Stopper



2x

Top Mount Roller



2x

Anti-jump
Block



2x

#8 (4.2mm x 25mm)
Floor Screws



2x

1/4 (6mm)
Floor Anchor



1x

Internal
Floor-Mounted
Door Guide



1x

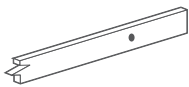
Optional
Wall-Mounted
Door Guide



2x

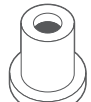
Optional
Floor-Mounted
Door Guide

83-3/4" TRACK COMPONENTS



1x

83-3/4" Track



5x

Wall Spacer



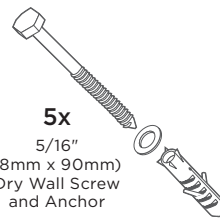
5x

5/16"
(8mm x 60mm)
Carriage Bolt



5x

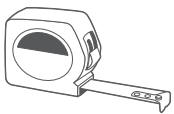
5/16"
(8mm x 25mm)
Anchor
(Pre-mounted to
Carriage Bolt)



5x

5/16"
(8mm x 90mm)
Dry Wall Screw
and Anchor

TOOLS REQUIRED



Tape Measure



Pencil



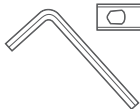
Cordless Drill



Phillips Screwdriver



Wrench



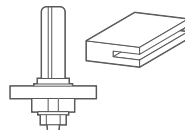
Allen Key



Level



Speed Square



1/4" Mortise Router Head
Required for Floor-Mounted
Door Guide Installation

IMPORTANT BEFORE YOU BEGIN

Proper installation requires 2 people

When installing directly into a non-concrete wall. Do not attempt to install the track solely to the drywall or any wall surface as this may not support the weight of the track and mounted door.

The track must be installed onto a piece of solid wood blocking (sold separately) using mounting screws (also sold separately).

Ensure the solid wood blocking is secured into the structural surface. Use a stud finder where necessary to locate studs and secure safely.

Typical solid wood blocking should be 84" (L) x 5-1/2" (H) x 7/8" (D)

If installing with the internal floor-mounted door guide, the door must be mortised 1/4" wide x 3/4" deep centrally.

An optional wall mounted door guide and optional floor mounted door guides have also been provided for non-mortised door installation.

Barn Door Installation Guide

BARN DOOR HARDWARE 83" TOP MOUNT KIT



MASONITE.

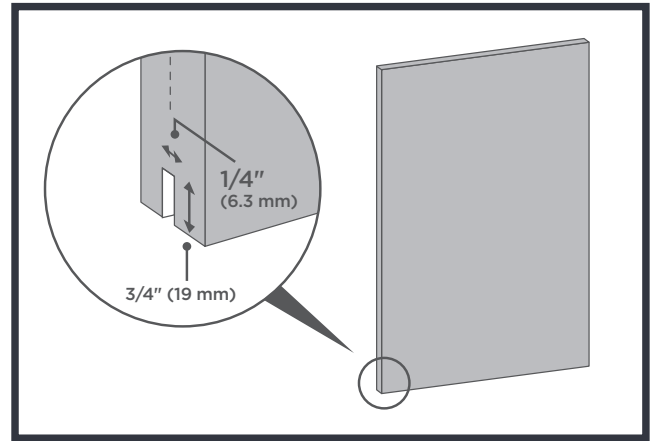
Open to extraordinary.

1 DOOR PREPARATION

NOTE: a second optional wall-mounted door guide has also been provided in this kit should you not wish to mortise your door.

Mortise 1/4" wide x 3/4" deep groove centrally to the bottom of the door for use with the floor-mounted door guide. This will ensure smoothness of door travel side-to-side and will prevent the door from swinging in and out.

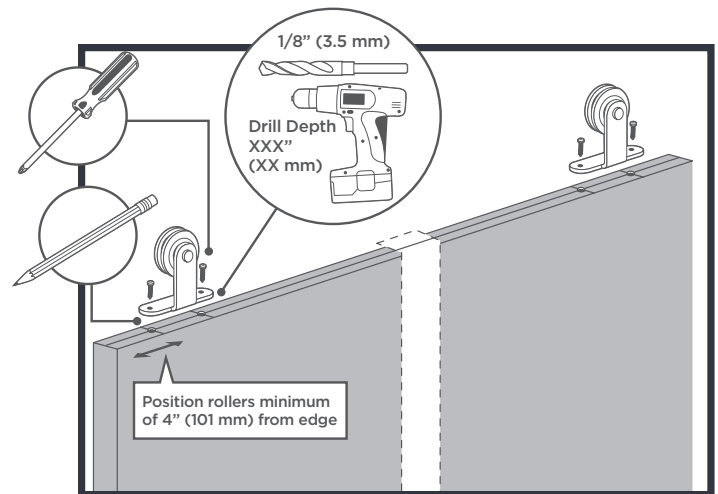
If you prefer, you can also have your door mortised at the store you have purchased your door (typically, for an additional charge). See your store for details.



2 DOOR PREPARATION ROLLER INSTALLATION

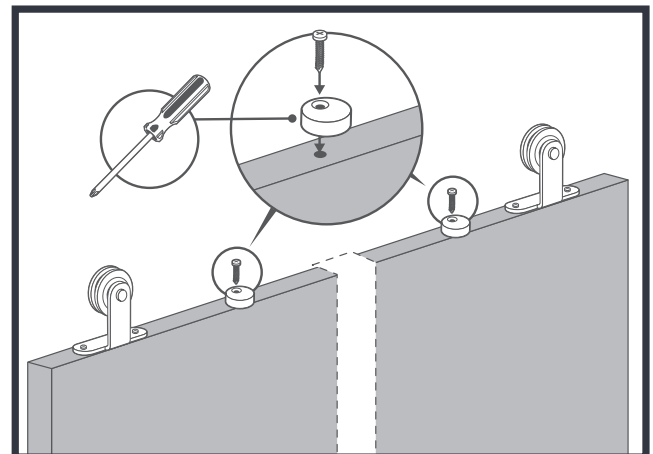
Position each roller a minimum of 4" from the edge of the door.

Mark the first hole with a pencil and pre-drill 1/8" holes, then secure into place. Mark the second hole with the roller in place to ensure the roller is secure. Repeat for second roller.



3 DOOR PREPARATION - ANTI-JUMP BLOCK INSTALLATION

Position each anti-jump block at least 1" from the edge of the rollers. Tighten slightly to secure in place.



Barn Door Installation Guide

BARN DOOR HARDWARE 83" TOP MOUNT KIT



MASONITE.

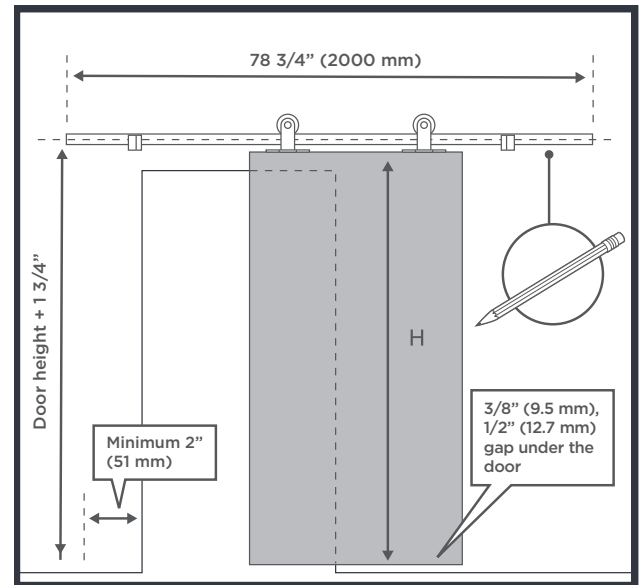
Open to extraordinary.

4 CONCRETE WALL PREPARATION

If installing into drywall - please proceed to step 7.

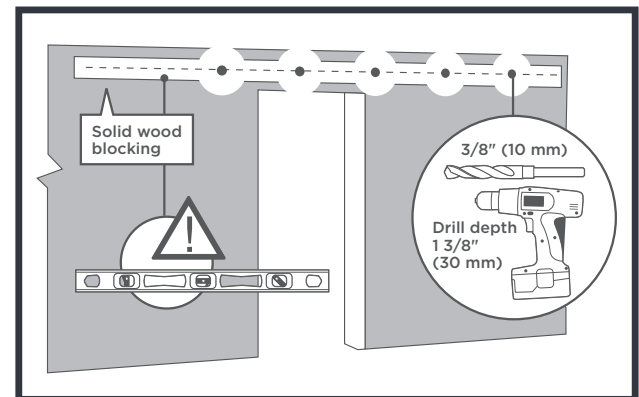
Position the track by measuring up from the door height (H) + 1-3/4" to the center of the track. Also ensure a gap of 3/8" - 1/2" at the bottom. Ensure the track is level and leave a minimum of 2" from the end of the track to the side of the opening (as shown).

If installing with an opening for 80" standard door size, remove the top trim and cut the side trim horizontally along the height of the opening.



5 CONCRETE WALL PREPARATION

Position the track in place ensuring that it is level, mark the holes on the track using a pencil and pre-drill 5/16" holes into the concrete.

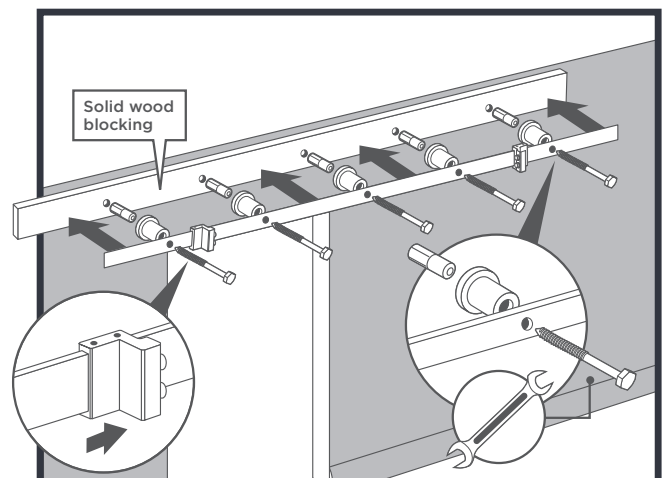


6 CONCRETE TRACK INSTALLATION

Important: Before mounting track, slide both stoppers onto the end of the track inside the first hole.

Note: The stoppers are handed.

When installing directly into concrete, insert using the provided anchors and carriage bolts (with washers). Ensure to unscrew to separate the carriage bolt and anchor to install correctly, securing with a wrench.



Barn Door Installation Guide

BARN DOOR HARDWARE 83" TOP MOUNT KIT



MASONITE.

Open to extraordinary.

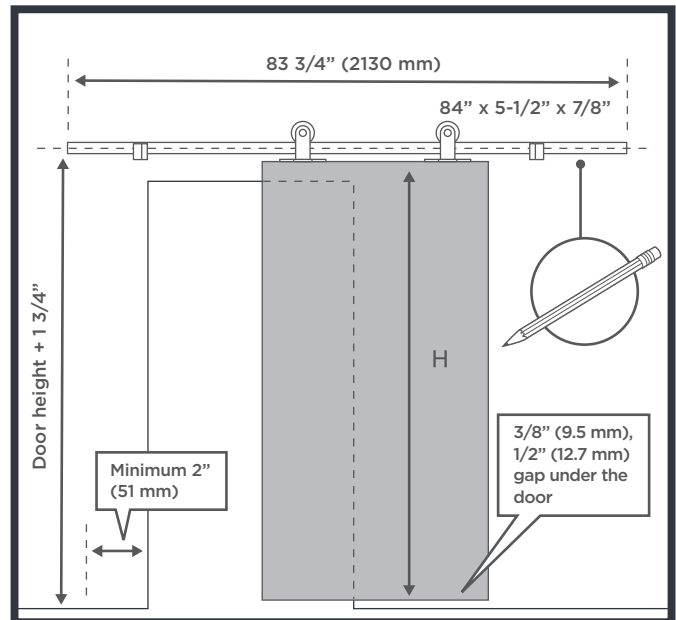
7 DRYWALL WALL PREPARATION

When installing into drywall, a piece of 84" x 5-1/2" x 7/8" solid wood blocking is required to be mounted to the wall before proceeding with the track installation.

Position the solid wood blocking with track by measuring up from the door height (H) + 1-3/4" to the center of the track. Also ensure a gap of 3/8" - 1/2" at the bottom. Lastly, ensure the solid wood blocking is level and leave a minimum of 2" from the end of the blocking to the side of the opening (as shown).

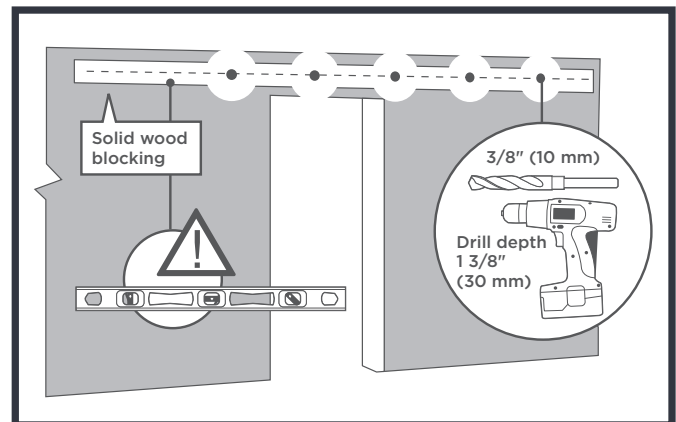
If installing with an opening for 80" standard door size, remove the top trim and cut the side trim horizontally along the height of the opening.

Paint or stain the wood blocking to your desired finish.



8 DRYWALL WALL PREPARATION

Position the track in place ensuring that it is level, mark the holes on the track using a pencil and pre-drill 5/16" holes into the concrete.

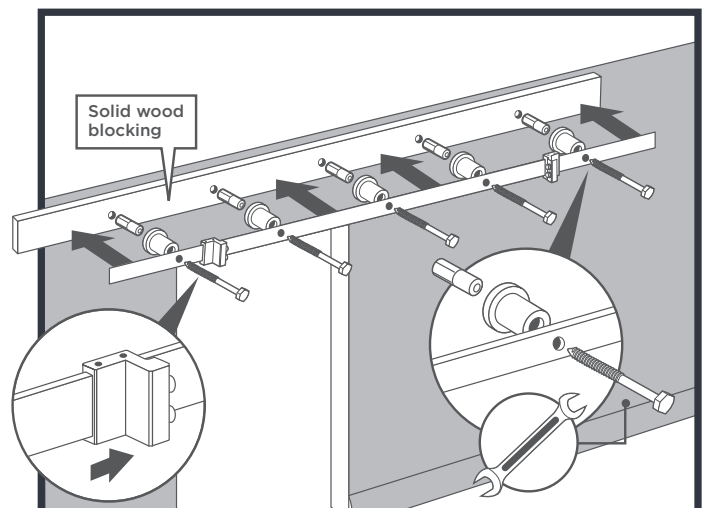


9 DRYWALL TRACK INSTALLATION

Important: Before mounting track, slide both stoppers onto the end of the track inside the first hole.

Note: The stoppers are handed.

When installing into the solid wood block and wall, insert using the provided wall screws. Align each spacer to the track holes, inserting spacers and screws (with washers), securing with a wrench.



Barn Door Installation Guide

BARN DOOR HARDWARE 83" TOP MOUNT KIT

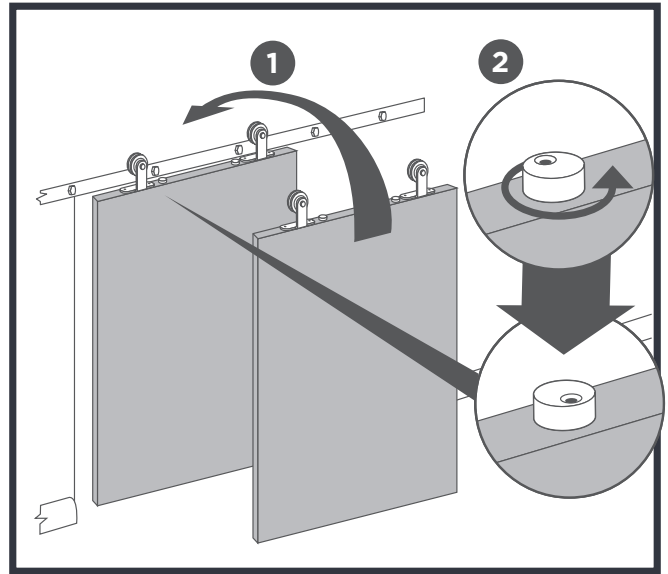


MASONITE.

Open to extraordinary.

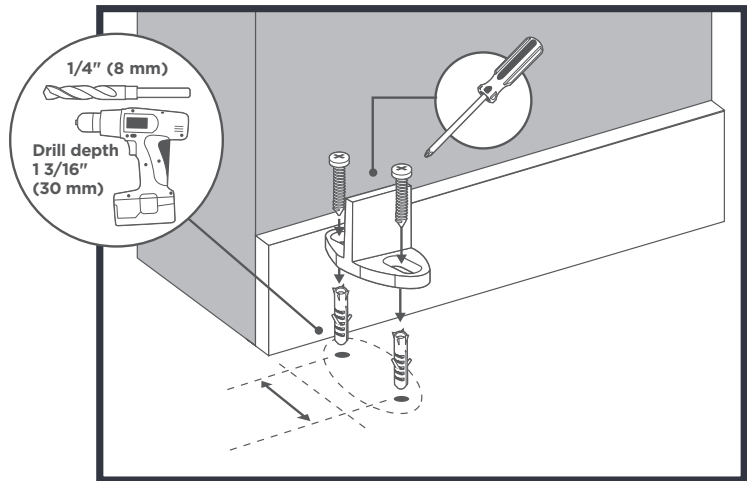
10 HANGING THE DOOR

Place the assembled door onto the secured track and tighten each anti-jump block. Ensure all parts are operating correctly by sliding the door side-to-side.



11 FLOOR-MOUNTED DOOR GUIDE INSTALLATION

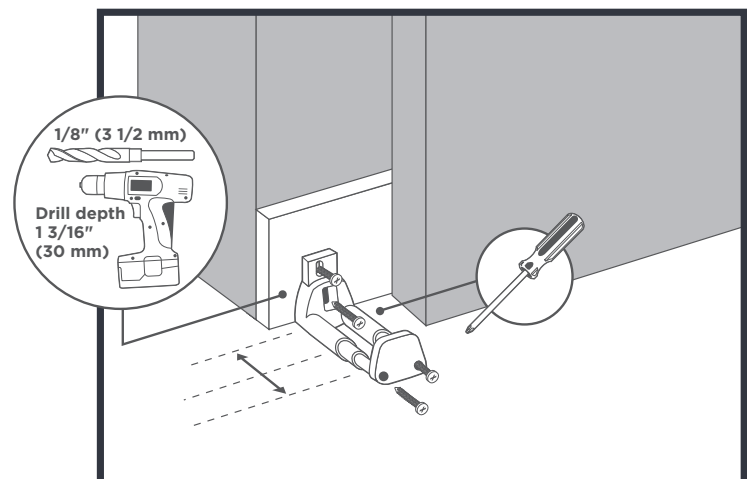
Once the door is plumb, position the floor-mounted door guide inside the mortised door, line up close to the opening. Slide the door side-to-side to ensure functionality for final placement and fasten with screws. If drilling directly into a concrete floor, predrill 1/4" hole and use the anchors provided.



12 OPTIONAL WALL-MOUNTED DOOR GUIDE INSTALLATION

Line up close to the opening, position and secure the wall-mounted door guide directly into the wall or trim, extending the guide as necessary to allow the door to travel side-to-side. Tighten to secure in place.

Note: Adjust correctly for 1-3/8" or 1-3/4" thick doors for smooth opening and closing operation.



Barn Door Installation Guide

BARN DOOR HARDWARE 83" TOP MOUNT KIT



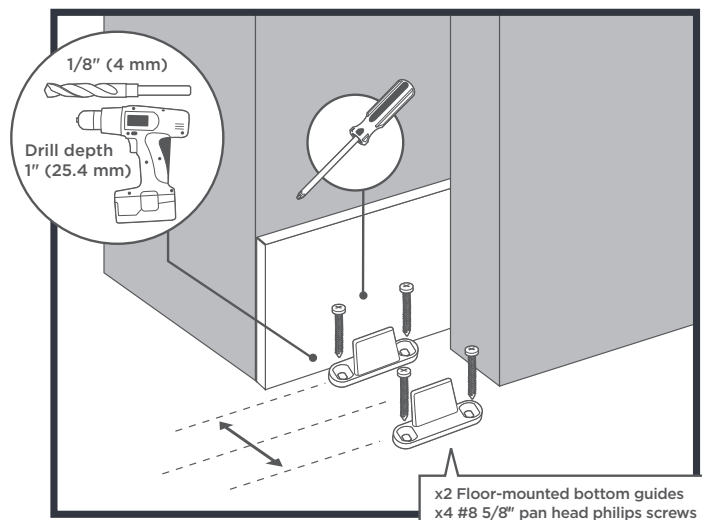
MASONITE.

Open to extraordinary.

13 OPTIONAL FLOOR-MOUNTED DOOR GUIDES INSTALLATION

Line up close to the opening, position both the floor-mounted door guides to allow the door to travel side-to-side on both sides of the door. Screw into place directly into the floor.

Note: Measure correctly for 1-3/8" or 1-3/4" thick doors for smooth opening and closing operation.



14 STOPPER INSTALLATION

Slide the door closed and to correct position of both stoppers. Using the provided Allen key, tighten into position to complete the installation of the Barn Door Kit.

