

# MIDLAND™

GARAGE DOOR MFG CO



**COMMERCIAL**  
OVERHEAD DOORS

---





## TEST US

We don't just say our doors are tough, we can prove it. We dare you to drive a truck over another door like we just did on this 3-Inch Energy Saver door.



# TECHNOLOGY AND STRENGTH

At Midland Garage Door Manufacturing Company, we are dedicated to the practice of combining technology and strength in every commercial door we build. Our skilled employees remain dedicated to providing you with the strongest doors in the industry. With nearly 40 years of experience building doors for homes, farms and commercial buildings, we take great pride in our workmanship and attention to detail.

When you purchase a Midland Garage Door, you can be confident that you chose the toughest commercial door on the market.

## THE TECHNOLOGY OF WEATHER RESISTANCE

Rest assured that your door withstands the harshest weather. We manufacture our doors in the Midwest, so our doors are field-tested in some of the worst elements and more than a few breezy days, to say the least. Our doors keep the elements out and stand strong against some of the toughest wind gusts. Thick rubber seals form a tight connection to the pavement, a high-density, closed-cell polystyrene core keeps the temperature inside steady, and the exceptional wind-load resistance rating exceeds industry standards.

## THE STRENGTH OF COMPONENTS

Get durability and reliability with a door that uses heavy-duty galvanized steel tracks and hardware. Like all of our components, our oil-tempered, helical-wound torsion springs ensure a lengthy life. We design each door with the same quality and long-lasting value we want for our own buildings. That means years of trouble-free operation.

## THE TECHNOLOGY OF DESIGN

Make your selections count. At Midland, our experienced team not only focuses on precision manufacturing, but also on the detail work. We work one-on-one with you to personalize your door. Combine the best of five door designs for your specific building, decide from four window sizes — or none at all — and select the color that best represents your brand, because tough doesn't mean bland.

## THE STRENGTH OF CUSTOMER SERVICE

When you work with us, you become part of the family. We answer the phone when you call because we want to help, not force you to select options and leave messages. Our extended family includes dealers committed to exceptional service and delivery drivers our dealers know by name. Our skilled shipping specialists load your door by hand so a forklift never touches it, virtually eliminating damage during shipping.

From initial inquiries to order fulfillment, our team of customer service professionals work closely with your dealer to ensure you get the perfect door for your needs.



## CHOOSE THE BEST

Keep your energy bills down. We sandwich 3 inches of closed-cell polystyrene foam between heavy-duty steel panels for a great R-value and a durable door.



## 3-INCH ENERGY SAVER

At Midland, we're proud to make the strongest, longest-lasting commercial overhead door in the industry, and our 3-inch Energy Saver is the best of the best. We pressure bond the steel to a high-density, closed-cell extruded polystyrene foam core, which gives the doors a 17.05 R-value. On the bottom, a commercial-grade astragal weather seal with an aluminum retainer also keeps the cold at bay by keeping the elements out.

We maintain our reputation for uncompromising quality and strength using 25- or 20-gauge steel on the outside and 25-gauge steel inside. The quality doesn't end there. The hot-dipped galvanized panels move seamlessly on the heavy-duty angle-mount galvanized steel track.



But just because these doors are tough, it doesn't mean they can't look good, too. Give your building a professional, custom look by selecting colors and window options that complement the pebble-grain textured steel panels.



## 2-INCH ENERGY SAVER

Match your overhead door to your business with our custom-colored 2-inch Energy Saver doors. Keep the elements out by using a polystyrene core insulation and a commercial-grade astragal weather seal with an aluminum retainer along the bottom.

We make it look good and build it to last with the 25- or 20-gauge embossed pebble-grain textured steel on the front and 25-gauge steel on the inside. Heavy-duty, galvanized steel track and hardware keep it running smoothly for years to come. The simplicity and reliability of our 2-inch Energy Saver makes it a strong choice to complement new construction or upgrade an existing building.



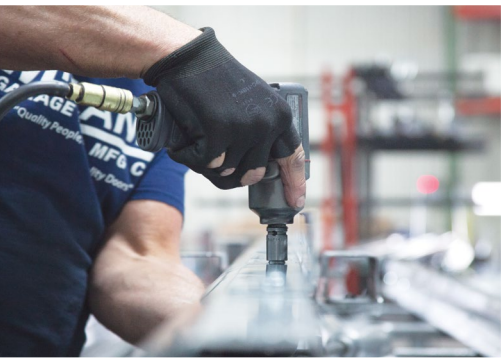
\* All Midland Garage Door residential designs are available in commercial sizes. Please consult your dealer for a Residential Door brochure to view the additional panel, color, window and hardware options.



## FORGET THE WEATHER

We build our doors in the Midwest with heavy-duty galvanized steel track and hardware. High winds, snow and ice won't slow these doors down.



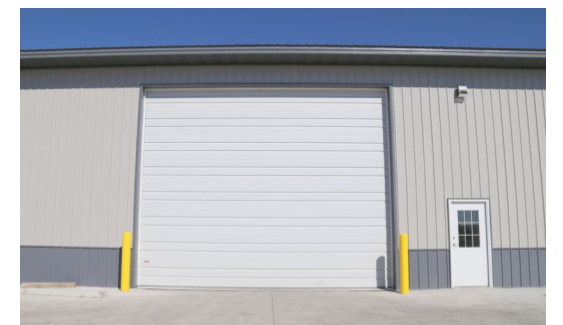


## RIBBED

### CS 20, CS 24, CS 26

Get strength and value with our CS Series of commercial overhead doors. Each starts with a strong, 2-inch ribbed base for added strength and uses pebble-grain textured steel in 20-, 24- or 26-gauge thicknesses for durability. We spot weld the CS20 and CS24 doors by hand for greater structural integrity than the many bolt-together doors on the market.

Choose insulated or un-insulated to best suit your building's purpose and the surrounding environment and then select paint colors and windows to best enhance your building. Each door includes an extra-wide commercial-grade astragal weather seal with an aluminum retainer on the bottom to keep dirt, rain and snow out. For a clean finish, our CS 20 is available in a flush panel.



## DO IT RIGHT

Our experienced team pulls together the best designs and highest quality materials and presents them with the best customer service. We're here to ensure your success.







## SWING-UP CENTER POST SYSTEM

For even more customization, we offer a Swing-up Center Post System — available in both our 2-inch and 3-inch-thick doors. The Swing-Up Center Post adds support for two or three smaller doors, resulting in an extra-wide door opening. A two-door center post system can cover openings as large as 48 feet, while a three-door system can cover 60-foot openings.

Heavy-duty, hand-welded hinges and steel head and floor plates support each post that can also be customized with powder coating in one of our standard Midland colors.

## GO BIG OR GO HOME

With our swing-up center post system, it's never been easier to get your big equipment in and out.

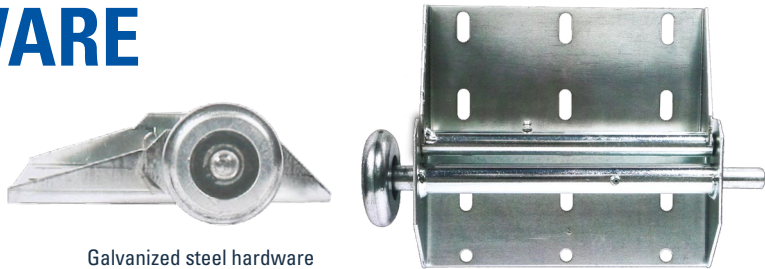




# SELECT YOUR HARDWARE

## AND HEADROOM REQUIREMENTS

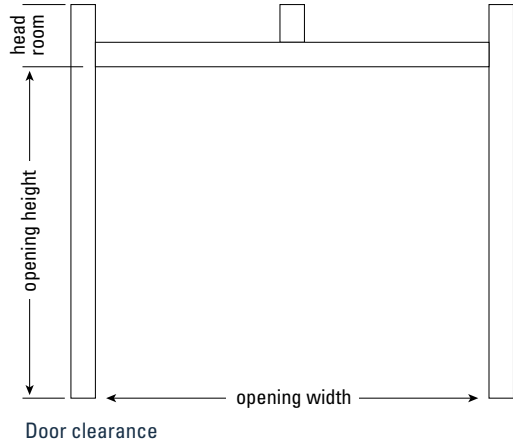
Choose from a variety of heavy-duty track mountings and hinges to meet your specific needs for your custom commercial overhead door.



Galvanized steel hardware

TYPE OF TRACK	HEADROOM	SIDEROOM	BACKROOM
15-Inch Radius 2-Inch Track 3-Inch Track	15 - 17 inches 16 - 21 inches	4 -1/2 inches on wood 5 inches on steel	Door height plus 20 inches
12-Inch Radius 2-Inch Track	13 - 14 inches	4 -1/2 inches on wood 5 inches on steel	Door height plus 20 inches
* Low Headroom 2-Inch on 2-Inch Track, Springs Front	10 - 11 inches	6 inches on wood 7 inches on steel	Door height plus 30 inches
* Low Headroom 2-Inch on 3-Inch Track, Springs Front	10 - 11 inches	6 -1/2 inches on wood 7 -1/2 inches on steel	Door height plus 30 inches
* Low Headroom 2-Inch on 2-Inch Track, Springs Rear	7 inches	6 inches on wood 7 inches on steel	Door height plus 30 inches
* Low Headroom 3-Inch on 3-Inch Track, Springs Rear	9 inches	6 -1/2 inches on wood 7 -1/2 inches on steel	Door height plus 30 inches

\* Low headroom not available on some door sizes.  
Additional track sizes available, including high lift, inclined and full-vertical tracks. Consult your Midland dealer for details.



Extra-wide astragal weather seal



Heavy-duty torsion spring system

# UPGRADE WITH

## OUR HARSH ENVIRONMENT PACKAGE

To provide customers with additional weather protection, we offer a Harsh Environment Package. The package includes our toughest components to effectively stand up to Mother Nature.

### PACKAGE INCLUDES

- Corrosion-resistant rollers
- Galvanized spring wire
- Zinc-plated shafts
- Stainless steel cables
- 11-gauge heavy-duty hinges
- 4-3/8-inch shielded bearings on ends and center

**Want to upgrade the strength of the door?** Opt for our heavy-duty hardware package, which includes our one-piece Triple End Stile hinges with grease zerks and 5/8-inch rollers. Best of all, these components come standard on doors 30-feet-3-inches wide and larger.

### WE WILL GUARANTEE IT

We're confident in the strength and technology of our commercial overhead doors and we back that with a decade-long promise that it will meet your needs. All Midland Commercial Overhead Doors include a limited 10-year warranty.

\*Please visit your Midland Garage Door authorized dealer for details.







## CUSTOMIZE IT

Give your building a custom look. Choose from eight door colors and four window sizes. There's no reason heavy-duty can't look good.



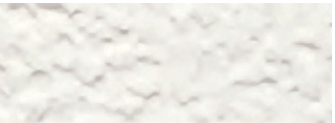
# PAINT & WINDOWS

## CUSTOM-BUILT SELECTIONS

At Midland, we want your door to be distinct, strong and reliable — just like your business. Match your building or brand with a variety of paint colors and window designs.

### CHOOSE YOUR COLOR

Midland commercial overhead doors come in a range of color options to match the exterior finish of your building.



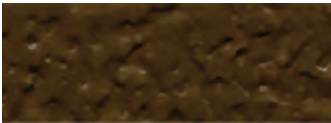
White



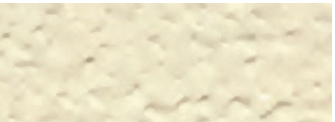
Sandtone



Green



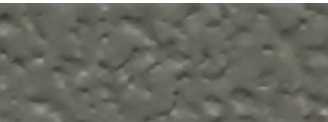
Coffee



Almond



Beige



Tera-Bronze



Brown

\* Due to the printing process, the colors in this brochure might not be exact; contact your Midland dealer for more accurate colors.

	White	Sandtone	Green	Coffee	Almond	Beige	Tera-Bronze	Brown
3-Inch Energy Saver	•	•	•	•	•	•	•	•
2-Inch Energy Saver	•	•	•	•	•	•	•	•
CS 20	•							
CS 24	•	•						•
CS 26	•							•

### PICK A WINDOW DESIGN

Bring natural light into your garage by customizing your commercial overhead door with windows. Windows can be added to all of our doors in a wide range of sizes, patterns and frame options.

	32-by-14 inches	24-by-12 inches	24-by-7 inches	24-by-5 inches
3-Inch Energy Saver	•	•	•	
2-Inch Energy Saver		•	•	
CS 20		•		•
CS 24		•		•
CS 26		•		•







**MIDLAND**<sup>™</sup>  
GARAGE DOOR MFG CO  
[www.midlandgaragedoor.com](http://www.midlandgaragedoor.com)

If you're interested in adding technology and strength to your business or shop, consider Midland Garage Doors. Since 1978, we've provided our customers with heavy-duty, customized commercial overhead doors, and we look forward to doing the same for you.

West Fargo, ND 58078  
675 12th Ave. N.E.  
800-437-4056

Chaska, MN 55318  
4055 Norex Drive  
800-521-0047

Omaha, NE 68138  
13661 Giles Road  
800-533-8358

Midland Garage Doors Sold By: