

Installation Recommendations



Standard Panel Installation

New Wave Standard/Fascia Mount Panels are attached to both the front lip of the gutter and the fascia board which aids in strengthening the gutters. Standard Panels are ready to be installed right out of the box.

Standard Installation *Fascia Mount*



Insert the panel into the gutter and butt it directly against the end cap.



Fasten the front lip of the panels to the front of the gutter using Front Lip 1/2" Zip Screws. Use (4) Screws per panel.



New Wave can be installed either level with the gutter or at a pitch up to 10 degrees.

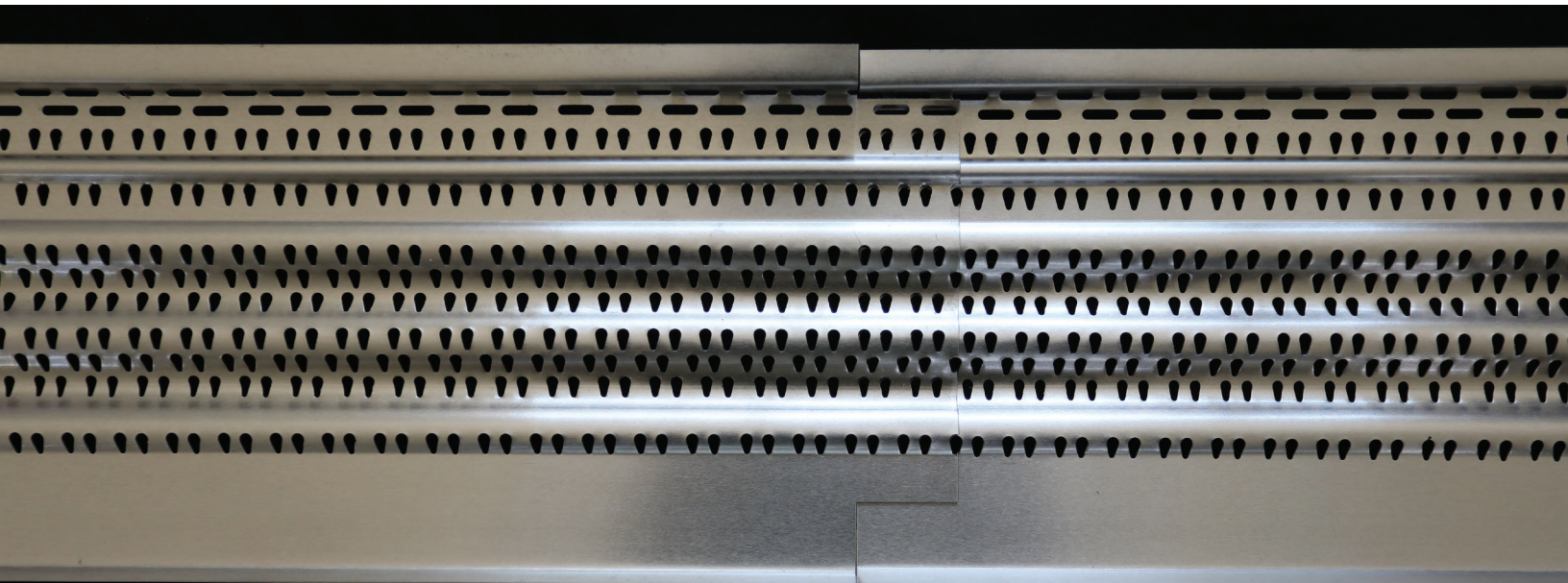
Installing with a pitch will aid in preventing debris from collecting on the panel.

Insert 4 1/2" zip screws into the fascia section of the panel parallel to the screws on the lip of the gutter

Overlapping Panel Installation

The New Wave panel is manufactured with a notch which allows the panels to be easily overlapped with no cutting.

The notch of the panel should sit on top of the full panel section as shown below.



End Cap Installation

End caps are not required with New Wave, but may be used for extra protection.

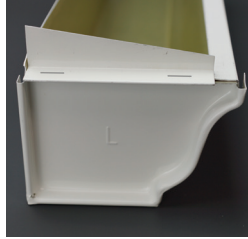
Standard End Caps



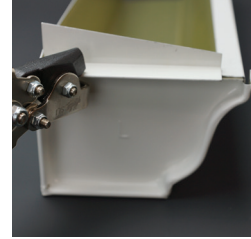
Factory-cut End Caps come in left and right versions.



Apply a small amount of sealant down the length of the crease.



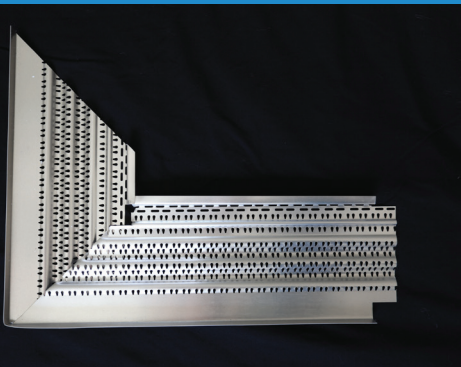
Slide the end cap onto the edge of the gutter end cap.



Using End Cap Crimpers, crimp twice to secure to the gutter.

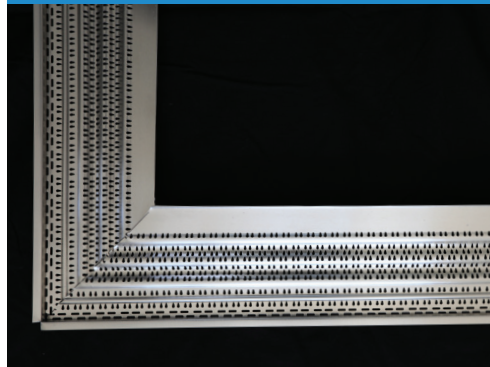


Inside 90 Degree Corner:



1. Cut a 45 degree triangle out of the panel leaving fascia mount section in tact.
2. Lap panel over roughly 1" and remove and part required for a clean overlap.
< See photo.

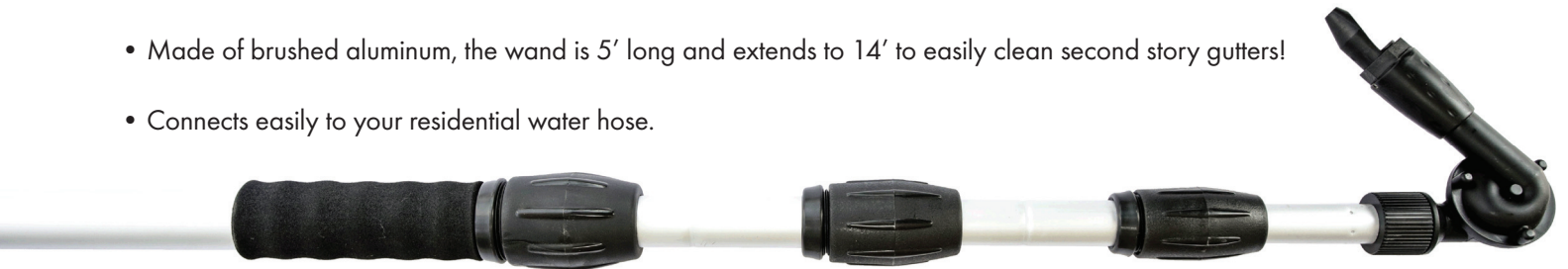
Outside 90 Degree Corner:



1. Cut a 45 degree triangle out of the panel.
2. Lap the panel over to create the 90 degree corner. The can also be completed with two separate panel sections.
< See photo.

QE Universal Cleaning Wand

- Made of brushed aluminum, the wand is 5' long and extends to 14' to easily clean second story gutters!
- Connects easily to your residential water hose.



Installation Tips from the Experts

General Installation

- New Wave is designed to be used on a variety of K-style, Half Round, and Box style gutters.
- Copper Gutters: When installing aluminum gutter guards with Copper gutters proper care must be taken to ensure the dissimilar metals do not come in contact. Use at least two layers of Corrosion Resistant Tape and Stainless Steel Screws to prevent contact. If there is a copper drip edge around the home, use a Corrosion Resistant Spray and spray all sides, including screws and screw holes. **NOTE: NEW WAVE PANELS AND MITERS CANNOT BE INSTALLED IN CONJUNCTION WITH A COPPER ROOF.**
- Screws: Zinc-Plated Steel Screws are recommended for all installations except with copper. Stainless steel screws must be used with copper gutters.
- New Gutter Installation: leave proper spacing for gutter guard panels when hanging new gutters

Standard Installation

- It may be necessary to rehang the position of the gutters to allow for the proper spacing for panel installation.

**Check our our website for
install videos!**

NewWaveGutterProtection.com

