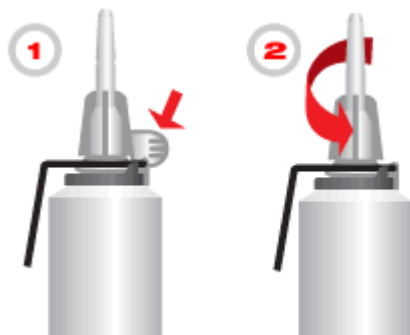


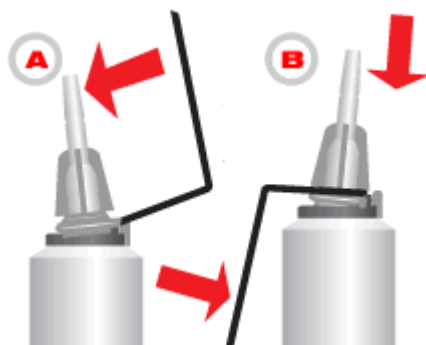
How to Use:**Power Can Dispensing Instructions**

Surfaces must be clean, dry, and free of foreign materials.

1. Snap off the tamper-proof tab from nozzle, then remove red overcap before dispensing.
2. To open, turn white nozzle 90 degrees counterclockwise. This will open valve and raise lever.
3. To dispense the adhesive, depress the lever.
4. Apply adhesive to one of the surfaces and immediately press into place.
5. After use, turn white nozzle 90 degrees clockwise to close valve and place cap back on nozzle.



When using with Loctite® Fast Frame™ Framing Brackets, apply adhesive to the brackets in S-shaped patterns, and then place the brackets onto the appropriate location of the column. Install drywall when adhesive fully dries.

**If sealant has dried up:**

- A. If sealant has dried up in nozzle, with nozzle in closed position, swing lever back. Pull nozzle forward to remove and then clean nozzle tip with paper or compressed air line.
- B. Relocate nozzle back over valve, with the two thick plastic fins pointing to the back hinge and front of lever. Swing lever back over nozzle to original position and slightly press the nozzle backwards towards the hinge. Use lever to firm "click" nozzle back in position.



WARNING: Unused sealant may irritate eyes. If this happens, flush with water; call physician. Avoid prolonged skin contact. Use adequate ventilation.

PRESSURIZED CONTAINER: Do not leave aerosol stored inside passenger compartment of vehicle as the aerosol is affected by direct sunlight. The aerosol should be stored in trunk of vehicle. The aerosol is affected by extreme high and cold temperatures. Do not expose to temperatures exceeding 120°F (50°C). Do not pierce or burn, even after use. Do not remove rubber plug on base of can.

KEEP AWAY FROM CHILDREN.

Loctite and Fast Frame are trademarks of Henkel Corporation, U.S.A. UL is a registered trademark of Underwriter's Laboratories, Inc.
©Henkel Corporation, 2005. All rights reserved.