

# V220 Stair Bracket

## Installation Instructions

- !** It is the responsibility of the installer to meet or exceed all code and safety requirements, and to obtain all required building permits. These instructions are only a guide and may not address every circumstance. The deck and railing installer should determine and implement appropriate installation techniques for each situation.

**FAIRWAY shall not be held liable for improper or unsafe installations.**

### Installation

#### **Step 1 Mounting Surface Preparation**

Cut top rail to correct length & angle. (See "V210 & V220 Vinyl Railing Installation Instructions.")

#### **Step 2 Measurement**

Measure the distance from edge of baluster pocket to end of rail for length of bracket.

#### **Step 3 Cut Bracket**

Slide bracket over scrap piece of rail and cut at correct angle. **NOTE:** Make sure mounting screw holes are facing towards baluster pocket.

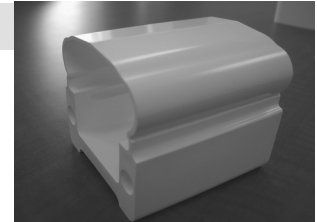
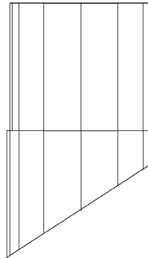
#### **Step 4 Drill Holes**

With bracket miter to stair or angle, follow drawing to the right. Drill a 7/32" hole and install the 3/16" stainless steel pin.

#### **Step 5 Mount Bracket**

With pin installed, slide bracket forward and lock in place. Set top rail onto balusters, center on mounting surface, mark and pre-drill mounting screws. Install mounting screws (using a #2 square driver) and screw covers.

Angle Mounting  
(Top View)



**NOTE:** Insert mounting screws into holes and apply pressure to mark the mounting holes. Then pre-drill holes at same angle as rail. On top angle cuts, make sure screw length is correct. Depending on the angle cut, mounting screw on outside of miter might be too long.

**NOTE:** For bottom vinyl rail use #900361 22.5°/45° internal bracket

V220 Stair Bracket (Top Rail)

